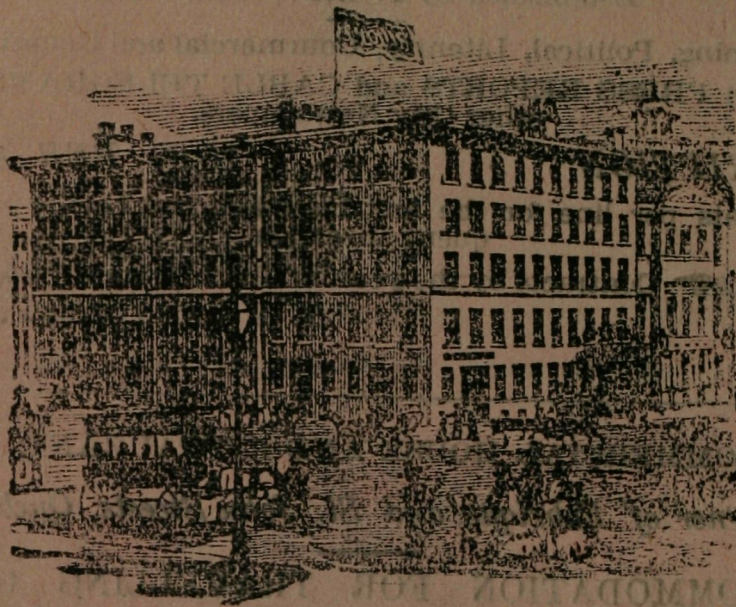


# ST. LOUIS HOTEL,

St Louis-st.



Quebec,

**THIS HOTEL**, which is unrivalled for **SIZE, STYLE** and **LOCALITY**, in **QUEBEC** is open throughout the year for **Pleasure and Business Travel**. It is eligibly situated near to, and surrounded by, the most delightful and fashionable promenades,—the Governor's Garden, the Citadel, the Esplanade, the Place d'Armes, and Durham Terrace—which furnish the Splendid Views and Magnificent Scenery for which Quebec is so justly celebrated, and which is unsurpassed in any part of the world.

The Proprietors, in returning thanks for the very liberal patronage they have hitherto enjoyed, inform the public that this Hotel has been **THOROUGHLY RENOVATED AND EMBELLISHED**, and can now accommodate about 500 Visitors; and assure them that nothing will be wanting on their part that will conduce to the comfort and enjoyment of their guests.

WM. RUSSELL & SON, PROPRIETORS.

## Phœnix Iron Works,

Corner of Queen and St. Dominique Streets,

### QUEBEC,

MANUFACTURE ALL KINDS OF

*Machinery, in Brass and Iron; Portable, Stationary and Marine  
Engines and Boilers; Mill Machinery; and all kinds  
of Jobbing and Repairs done at Moderate Rates  
and with Despatch.*